

TAIZHOU EASTERN CNC TECHNOLOGY CO., LTD.

Model

VTM500
Vertical turning lathe

GSK988TA Control System
A2-8 Spindle
10" Chuck
Hydraulic Servo Turret, 12-Post
Roller Linear Guideway
Chip Conveyor

415V-380V Transformer

VTM500



VTM500 Specs

Item	Unit	Specs	Note
Max swing over bed	mm	550	
Max machining height	mm	400	
Max machining diameter	mm	500	
Turning spindle nose		A2-8	
Turning spindle speed	r/min	50-3000	
Turning spindle rated power	kW	22	
Chuck	Power chuck	10"	

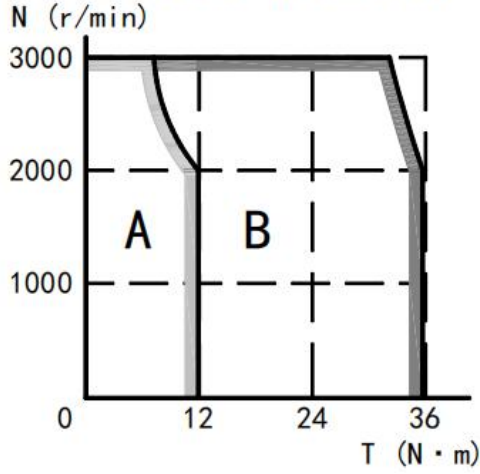
Milling spindle interface			HSK-A63	
Milling spindle speed		r/min	0-10000	
Milling spindle rated power		kW	30	
X travel		mm	1100	
Y travel		mm	400	
Z travel		mm	700	
B travel		°	+10 to -100	
X rapid traverse		m/min	24	
Y rapid traverse		m/min	24	
Z rapid traverse		m/min	24	
B max speed		r/min	30	
X servo motor power		kW	3.5	175SJT F-MZ2 20BH
X servo motor torque		Nm	22	
X servo motor speed		rpm	1500	
Y servo motor power		kW	2.5	130SJT F-M120 CH
Y servo motor torque		Nm	11.9	
Y servo motor speed		rpm	2000	
Z servo motor power		kW	3.5	175SJT F-M220 BH
Z servo motor torque		Nm	22	
Z servo motor speed		rpm	1500	
Turret rotary motor power		kW	0.75	80SJTA -M024 EH
Turret rotary motor torque		Nm	2.4	
Turret rotary motor rated speed		rpm	3000	
Turret rotary motor max speed		rpm	5000	
B max locking force		Nm	1500Nm@4Mpa	
Guideway			Roller linear	
Turret			12-post hydraulic servo	
Machine dimensions			3100×2800×2800	
Machine weight		kg	10000	
Milling tool magazine	Tools	PCS	24	
	Max diameter/length/weight		Φ80mm/300mm/8kg	
Turning tool	OD	mm	25×25	
	Boring	mm	32	
Total power	Voltage	V	AC380±10%	
	Frequency	Hz	50±1	

Accuracy				
Positioning accuracy	X	mm	0.01	
	Y	mm	0.01	
	Z	mm	0.012	
	B and C		±6"	
Repeatability	X	mm	±0.004	
	Y	mm	±0.004	
	Z	mm	±0.004	
	B and C		±4"	

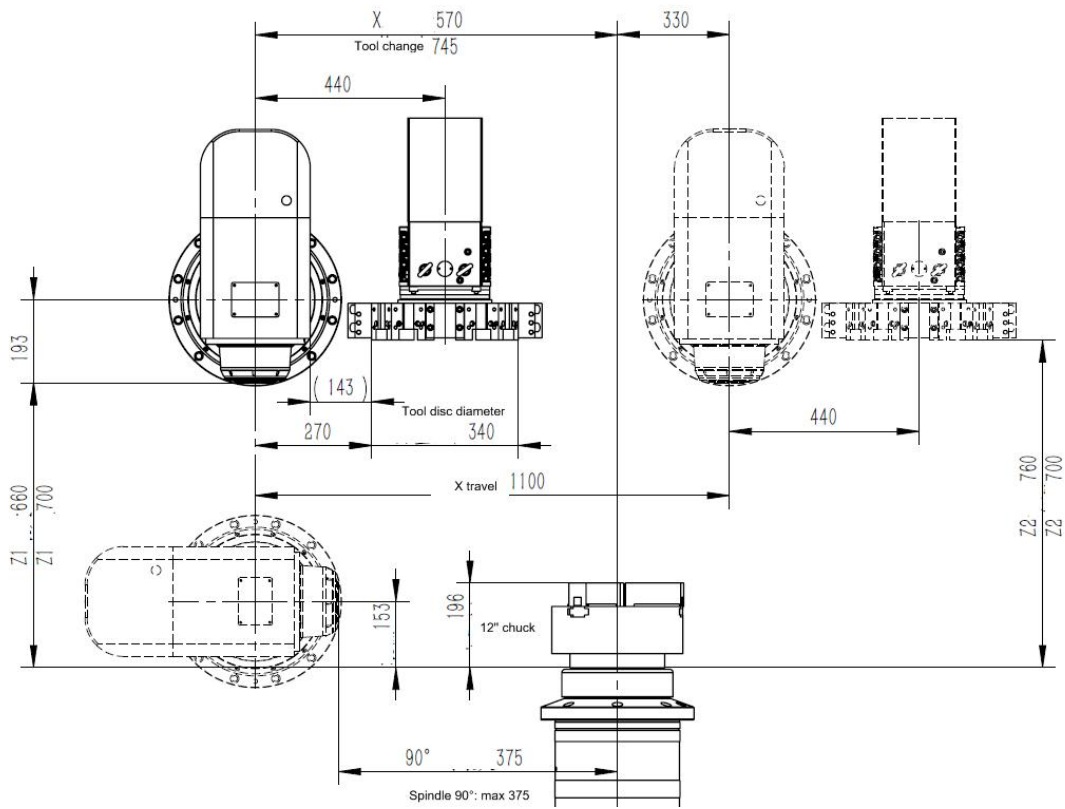
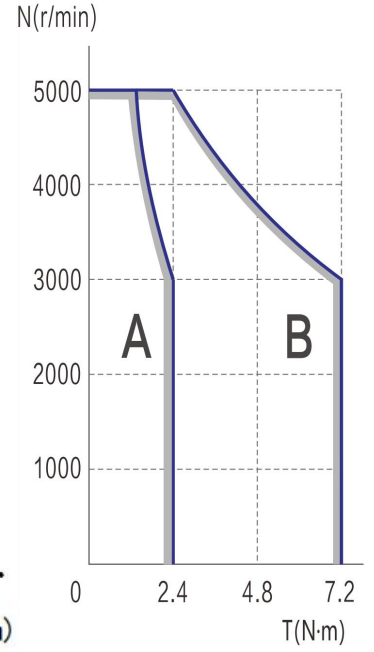
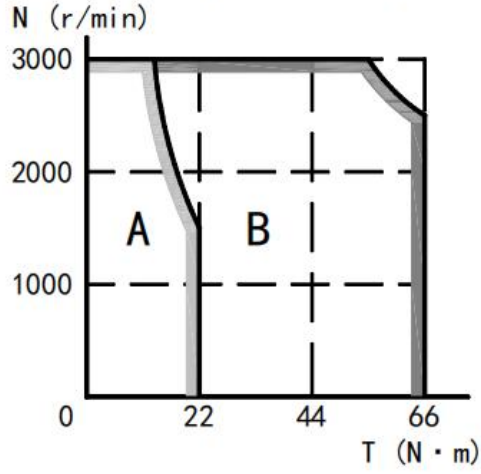
A: continuous; B: intermittent

80SJTA-M024EH

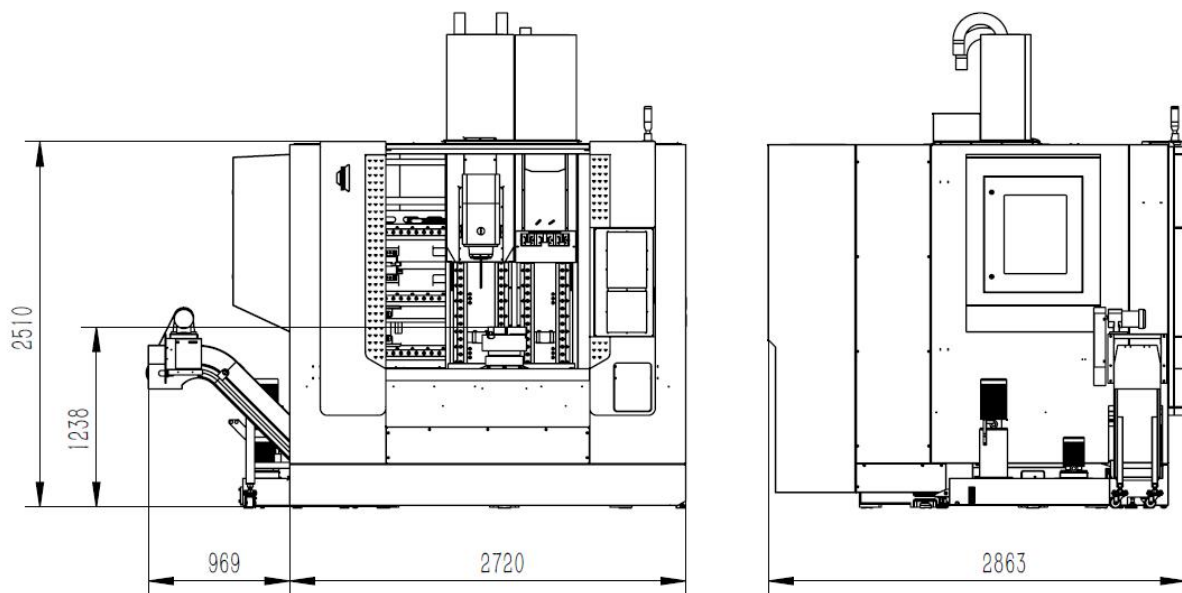
130SJTF-M120CH



175SJTF-M220BH



Tool interference diagram



Dimensions

VTM500 Configuration List

No.	Name	Model	Brand	QTY	Note
1	Spindle bearing	NN3024	NSK/SKF	1	
2	Spindle bearing	N1018	NSK/SKF		
3	Spindle bearing	BTM120	NSK/SKF		
4	Spindle grease		Imported		
5	Guideway	X 45 Y 55 Z 45	THK	1	Roller
6	Ball screw	X 5012 Y 4012 Z 4012	THK	1	
7	X bearing	40TAC90 DB	NSK/SKF	2	
8	Y bearing	30TAC62 DB	NSK/SKF	2	
9	Z bearing	30TAC62 DB	NSK/SKF	2	
10	Lubrication unit		CNP	1	
11	Hydraulic unit		Joint-venture	1	
12	Hydraulic chuck	10"	CHANDOX	1	Option
13	Power turret	12-post hydraulic servo turret	CINHO	1	
14	Milling axis		ABIG	1	
15	Cooling pump		LEO	1	
16	CNC system	GSK 25iMC-V15CD	GSK	1	
17	Electrical apparatus		Delixi/Zhengtai	1	
18	Machine transformer		China-made		
19	Servo transformer		China-made		
20	Foot switch		China-made		
21	Switch power		MeanWell		
22	AC contact		Schneider		

